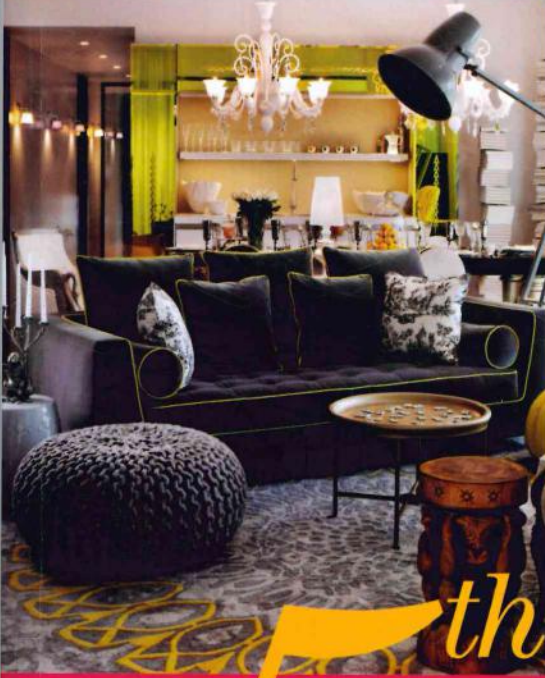


INDIAN EDITION

JANUARY 2014, ₹ 125

# CASAVIVA

ITALY'S LEADING INTERIORS AND DESIGN MAGAZINE



## 5th Anniversary Issue

• embrace colour • tangerine shades for the home • top trends for 2014

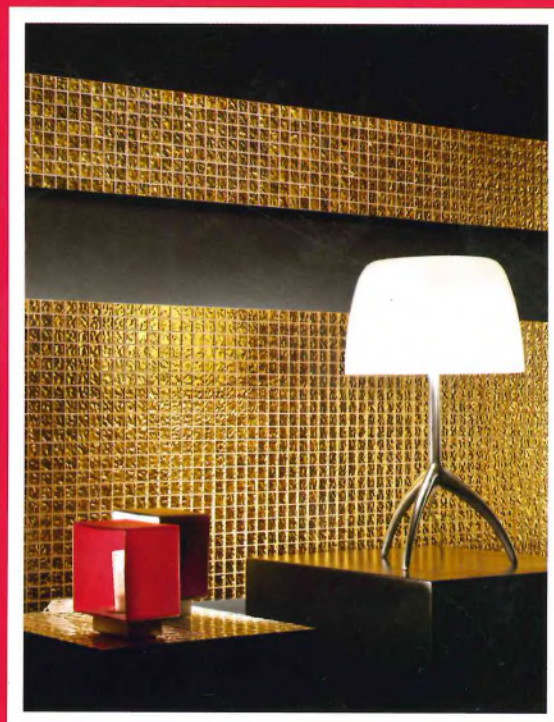




## STYLE NOTES

---

The inspirations are global this season and range from Indian motifs to Salvador Dali's art, flowing water and edgy crystal, creating timeless pieces.





# A BESPOKE HOME

This holiday apartment in Bangalore is designed to pack in the feel of a luxury home, while offering the comforts of a hotel.

*Photos courtesy FADD Studio*



Unlike the clichéd set-up of a formal and an informal living room which this huge space can accommodate, a single arrangement of four solid white sofas from Ligne Roset and grey Scandinavian-styled single-seaters were chosen. These act as colour blocks to offset the black and white newspaper print curtains.



Clutter-f  
has the l  
the pers





Clutter-free with minimalistic yet functional furniture, this apartment has the best of both worlds—the clean and neat look of a hotel and the personal touch and bespoke feel of a home.

The 4,300 square foot White Lodge, on Hayes Road in Bangalore, is a chic and contemporary three-bedroom apartment designed by Farah Ahmed and Dhaval Shellugar of FADD Studio as a holiday home for an NRI client who wanted a fresh look, much like a hotel, that was ready to plug and play when she visits with her family. Since her home in North America has a more classic and opulent look and feel with Indian accents, the brief for this apartment was the opposite, to create a space that was modern and clean-lined.

Says Farah, “Unlike feature walls for highlights, the strongest statement here is a lavish curtain with an abstraction of newspaper print, a bold statement on its own. Rust vintage rugs (from Arasthan) with a little distressed grey perfectly bridge the warmth of the beige marble floor with the cool starkness of the blacks and whites of the curtain and the furniture.”

The biggest challenge, she believes, was to effortlessly integrate the beige marble floor into the apartment with the black and white concept for a sleek and contrasting look.



PROJECT



A similar theme of simplicity runs through the bedrooms (left); minimal and warm with neutral upholstered beds and complementary lacquered furniture. The entrance (above, right) has two high-back chairs that sit against a gauze-like wallpapered wall. Different types of lights are used to create a variety of moods. In the living room (earlier page), the laser cut Jali on either side of the window in the living room creates delicate shadows and the larger-than-life floor lamp emanates soft and romantic light. In the bedrooms, the lights are simple architectural ones.



PROMOTION



## Chefs on Board

Turkish Airlines brings its travellers a flying experience like no other. The airline, known for its elaborate services, is introducing "Flying Chefs" on the Indian route to offer gourmet dining in the sky, at 37,000 feet. Through this service, the airline will offer a five-star restaurant-style, dining experience to business class travellers. A live kitchen on the flights and the interactive sessions with the chefs will recreate the entire Turkish food essence and provide an authentic taste of the cuisine to food lovers in India.

This new catering concept by Turkish Airlines, in conjunction with its world-renowned catering partner TURKISH DO&CO, has already been used on various international routes. It has won Skytrax awards for the "World's Best Economy Class On-Board Catering" in 2010 and 2011; and the "Best Business Class Catering" in 2013. This widely appreciated "Flying Chefs" service will soon be extended to India-Istanbul routes — Turkish's first such service on long-haul flights.

Especially selected for the Indian travellers, dishes from Turkish and world cuisines such as *sish kebab*, *karniyarik*, *manti*, and *imambayildi* will be freshly prepared and served on-board. Apart from these gourmet dishes which have never been experienced by Indian travellers before, Turkish coffee and Turkish delight will also be available. It's safe to say, business class travellers will be provided unparalleled attention and plenty of choices based on their individual preferences.

**TURKISH AIRLINES** | WIDEN YOUR WORLD  
For more information: [www.turkishairlines.com](http://www.turkishairlines.com)

## PROJECT



The dining room has two Bloom lights by Ligne Rose which act as foam sculptures over the dining table and chairs (Pinakin). The dining table's (Pinakin) base consists of an array of slanting lines. Leaning mirrors on one side not only reflect the black leather console and cabinet, but also create an illusion of space doubling the natural light flowing in from the two sides.

## STRIKING GEOMETRICAL SPACES

The team sourced entrance furniture from Bench Craft, while the huge fabric floor lamp was customised from Purple Turtle, the Jali from Cane Boutique and all the dining room furniture (dining set and consoles and bar unit) from Pinakin, the bedroom and media furniture from

Wood Décor. The project took about eight months to complete. Remarks Farah, "My favourite part of the house is the dining area as it's eye-catching with its colours and geometry."

The flooring, Botochinno marble, came from the builder. The designers also used a lot of wallpaper to bring in warmth and an area with a jali to create texture.

### TOP DÉCOR TIPS

- Be clutter-free and minimal and focus on natural light.
- Don't get caught up in doing "feature walls"; think outside the rectangle!
- Chose unique colour combinations and experiment with new materials.
- Balance is everything. Never compromise on that.



JK

