

Inside Outside

THE INDIAN DESIGN MAGAZINE

www.insideoutside.in

ISSUE 340 OCTOBER 2013

₹ 100

ALSO FEATURING

- Anju & Ashwin Lovekar
- Design Combine
- Pooja Reddy

COVER STORY

Kiran Kapadia, Shobhan Kothari & Anand Menon make a strong style statement while designing a Mumbai apartment



DIWALI
SHOPPING

TEXT: KANUPRIYA GARG
PHOTOGRAPHS: MANOJ MASAND, COURTESY THE ARCHITECTS.



With the use of rich colours, textures, and earthy materials, designers Farah Ahmed and Dhaval Shellugar of FADD Studio, create a contemporary haven for their clients Malini and Navin Kini in Bengaluru. They have crafted a space that is comfortable and refined instead of being lavish and opulent, much like the clients intended it to be.

Minimalistic Elegance



Farah Ahmed and
Dhaval Shellugar

A driftwood sculpture accents the corner in the living room and imbues the space with a touch of nature.



A beige couch from 'B&B Italia', a tan leather two-seater and two beautiful single-seaters, both from 'Lignet Roset' sit against a beige travertine-finished, armour paint coated wall in the living room.

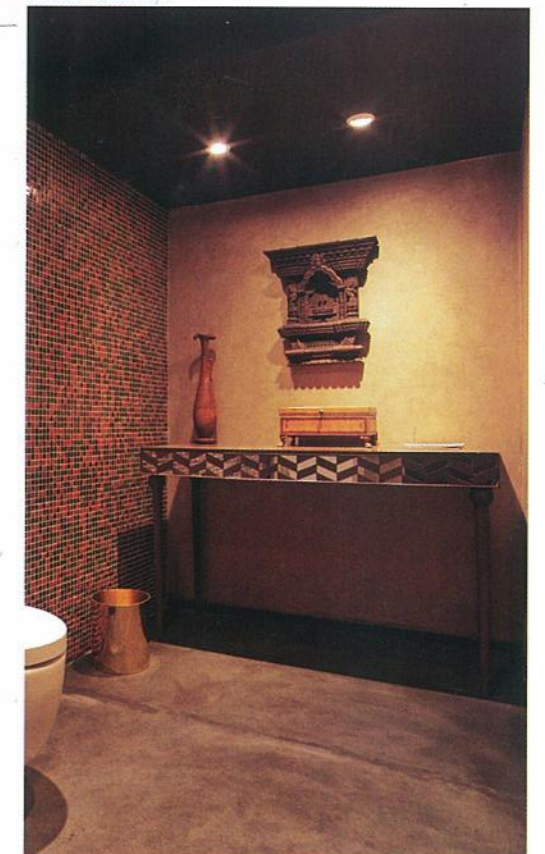


The dining table, with a twisted and sculpted base, is an attractive feature in the dining area. Three graceful 'Lignet Roset' lights placed above cast a soft light.



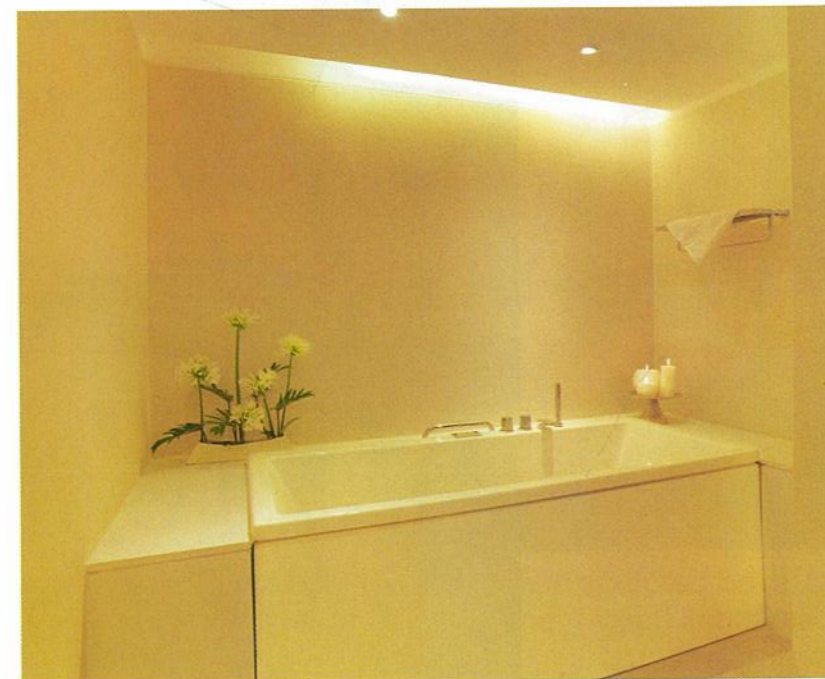
A white 'Gessi' basin is positioned in front of a dull gold beaten metal 'Good Earth' mirror.

The powder room is a shell of black granite flooring and dull gold armour paint coat.





The master bathroom is more spa-like, where the walls are decked with white ribbed tiles from 'Style Box'.



This bedroom is full of old colonial charm and sophistication and stands out with the presence of a 'Spanish' bed set against a lovely mustard wall.



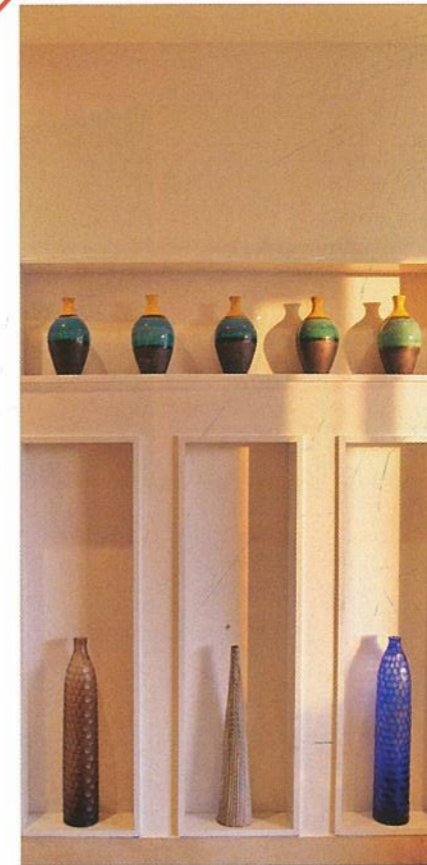
Luxurious walk-in-wardrobe with glass shutters makes immaculate storage mandatory.

With

out flamboyant feature walls or flashy furniture, the Kini residence is a standing example of understated poise. Within the modern shell of this chic three bedroom apartment, one can clearly see a mix of contemporary and colonial influences. 'When we visited the site, we saw lots of natural light and a part of the balcony facing the sunset. So earthy colours and materials that would be complemented by the light were a starting inspiration,' say Farah and Dhaval.

'Malini and Navin Kini, a sophisticated couple who travel a lot, have a very global outlook. They are aware of good design and quality products, which made it easier for us to explain our design concepts to them.' They wanted a home that exuded good taste and comfort, something stylish that could also accommodate their art, antique furniture and accessories from their travels. Other than that, they gave us the freedom to experiment. We were aware of their requirements and decided to bring in quiet luxury into their home through the use of rich colours and textures. The décor is warm and welcoming, truly a reflection of the clients.'

The apartment's original layout comprised four bedrooms, and a spacious dining, living and outdoor area. The architects connected two rooms to form one large master bedroom with a study/media area, a walk-in closet and a spa-like bath.



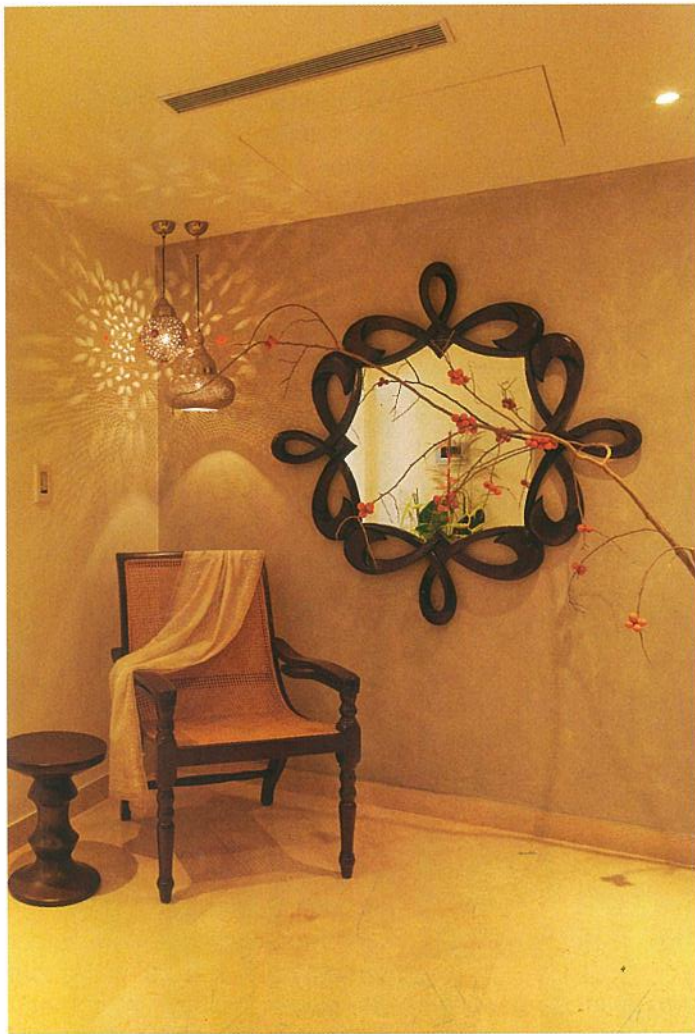
The entrance is arresting – one can't miss noticing a fascinating mishmash of beige marble and a grey cement-finished wall. An exquisite 'Good Earth' mirror, framed beautifully with a dry cherry blossom twig adds drama and at the same time, shows off the clients' love for Japanese flower arrangements. Under the mirror, a planter chair is positioned, whereas on the other side, a simple low table is placed under a painting by 'Layaraja'. This setting is soothing as much it is stunning and definitely sets the mood for the rest of the experience.

A warm and rich colour palette, mainly rusts, ochres and oranges, infuses the common areas. The hallway gives way to the living and

dining space. A beige couch from 'B&B Italia', a tan leather two-seater and two beautiful single-seaters, both from 'Lignet Roset' sit against a beige travertine-finished, armour paint coated wall in the living room. A driftwood sculpture accents the corner and imbues the space with a touch of nature. Warm and metallic tones are seen in the decorative cushions and rug. Opposite the armour paint coated wall, is a full walled TV unit in lacquered white. Attractive small niches house multiple vases from 'Cinnamon' and some of the clients' travel acquisitions. The dining table has a twisted and sculpted base which makes it an attractive feature in the dining area. The whole neutral set up of wood and chocolate brown leather rests on a colourful rug. Three graceful 'Lignet Roset' lights drop over the dining table and cast a soft light.

In the bedrooms, the colour comes from feature walls that are either finished in cement-like paint or wallpaper, while shades of blue and peach break the monotony of the space. One particular bedroom stands out with a 'Spanish' bed set against a lovely mustard wall. The whole room is full of old colonial charm and sophistication. This bedroom opens out into the balcony that is also connected to the living room. To continue these bright colours into the balcony, the wall adjacent to the room is finished with 'patina' cement mixed with dark blue inks. Blue and yellow cushions rest on the cement seating in the balcony. On the other side of this balcony deck is large outdoor furniture set, accented with mirrors, and

interiors



which creates a perfect spot for unwinding in the gorgeous Bengaluru weather.

For flooring, in addition to the marble provided by the builder, teak wood in the master bedroom and white oak in the grand children's bedroom have been utilised. The outdoor deck has neutral brown wooden flooring. Apart from the functional light fittings used for even and bright illumination, several coves have been designed and other ornamental lights picked, to allow the place to remain fresh and perky during the day and transform into a cosy space with subdued hues in the evening.

Tasteful art adorns the walls of the apartment, enhancing the charisma of the space. 'The clients' daughter owns an art gallery called 'Kynkyny', so we were lucky to have a large collection of art to play around with. Most of the art is Indian and works beautifully with the tones we began with,' say Farah and Dhaval.

The powder room is a shell of black granite flooring and dull gold armour paint coat. A white 'Gessi' basin is positioned in front of a dull gold beaten metal 'Good Earth' mirror. The most interesting feature is the ceiling-mounted gold 'Gessi' tap with a control on the left wall. The master bathroom

is more spa-like. The walls are decked with white ribbed tiles from 'Style Box' and one of the walls is highlighted with 'Patricia Urquiola' tiles with lace-like details, which have become a signature of the designer. The intricacy and grace of these tiles is unmatched. With a soft cove light, this bathroom lends a sense of calm and composure.

Nothing is over-the-top in the Kini residence but detailed and planned to perfection. The space strikes a seamless balance between being ornate and unpretentious. This residence is an impeccable specimen of classiness and subtlety, just like the folks who inhabit it. 