

₹ 100 October 2014

SOCIETY

INTERIORS

A MAGNA PUBLICATION
www.societyinteriors.co.in

NEWSSTAND COPY

SHAILESH
VEERA'S
INSPIRING APPROACH FOR
WITTY INTERNATIONAL SCHOOL

3XN'S NOVEL DESIGN
THE BLUE PLANET

With
A New
Cover Price
₹100/-

PLUS Greyscale Design Studio ● Parshwa Architects ● FADD Studio
Form & Space Architects ● Space Dynamix

DETAILED

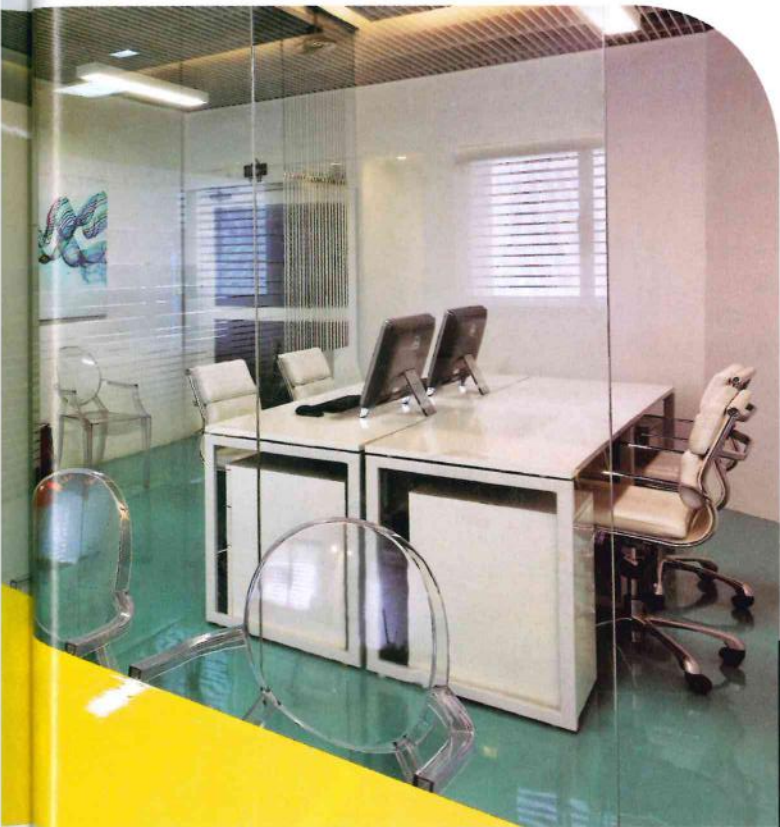
DESIGNS

BENGALURU-BASED
FADD STUDIO
DESIGNS SPACES BY
REINTERPRETING OLD
TRENDS IN A FRESH AND
CONTEMPORARY WAY.

Text: Bindu G Rao **Photographs:** Courtesy FADD Studio



CONTACT DETAILS
FADD Studio
Sophie's Choice
Office #102, 1st Floor, No 7
St. Mark's Road
Bengaluru 560001
080 22223661
www.faddstudio.com



The young and multi-talented **Farah Ahmed** and **Dhaval Shellugar**, partners at **FADD Studio**, worked at the renowned Khosla Associates before moving on to pursue their career interests further. While Farah moved to Milan and received a Masters Degree in Interior Design from Istitutio Marangoni; Dhaval continued at Khosla Associates and headed several diverse and award-winning projects. Later in 2012, with Farah looking to start her own studio and Dhaval wanting to explore new prospects, they started the Bengaluru-based FADD Studio (short for Farah and Dhaval Design Studio).

The studio's projects range from residences and offices to retail and hospitality spaces. At present, the studio is designing a clubhouse for an exclusive gated community and luxury villas on the outskirts of Bengaluru.

"It is easy to stagnate when a style becomes the firm's identity. While our design aesthetic is mostly eclectic and contemporary, we try not to get comfortable with just one style or type of design and specialization. We believe that having a singular style defies the purpose of design, which is to push beyond what we know and achieve something unique in every project. Our firm not only embraces new concepts and techniques, but also creates trends of our own that are timeless," explain the dynamic duo.

Speaking about their relationship with the clients, they say, "Dealing with clients is a completely different ball game than designing spaces. Each client is different which makes designing fun; but as each client is different, it also makes our job challenging."

Here's taking a look at some of their exceptionally well designed projects in the garden city of Bengaluru.

FADD Studio

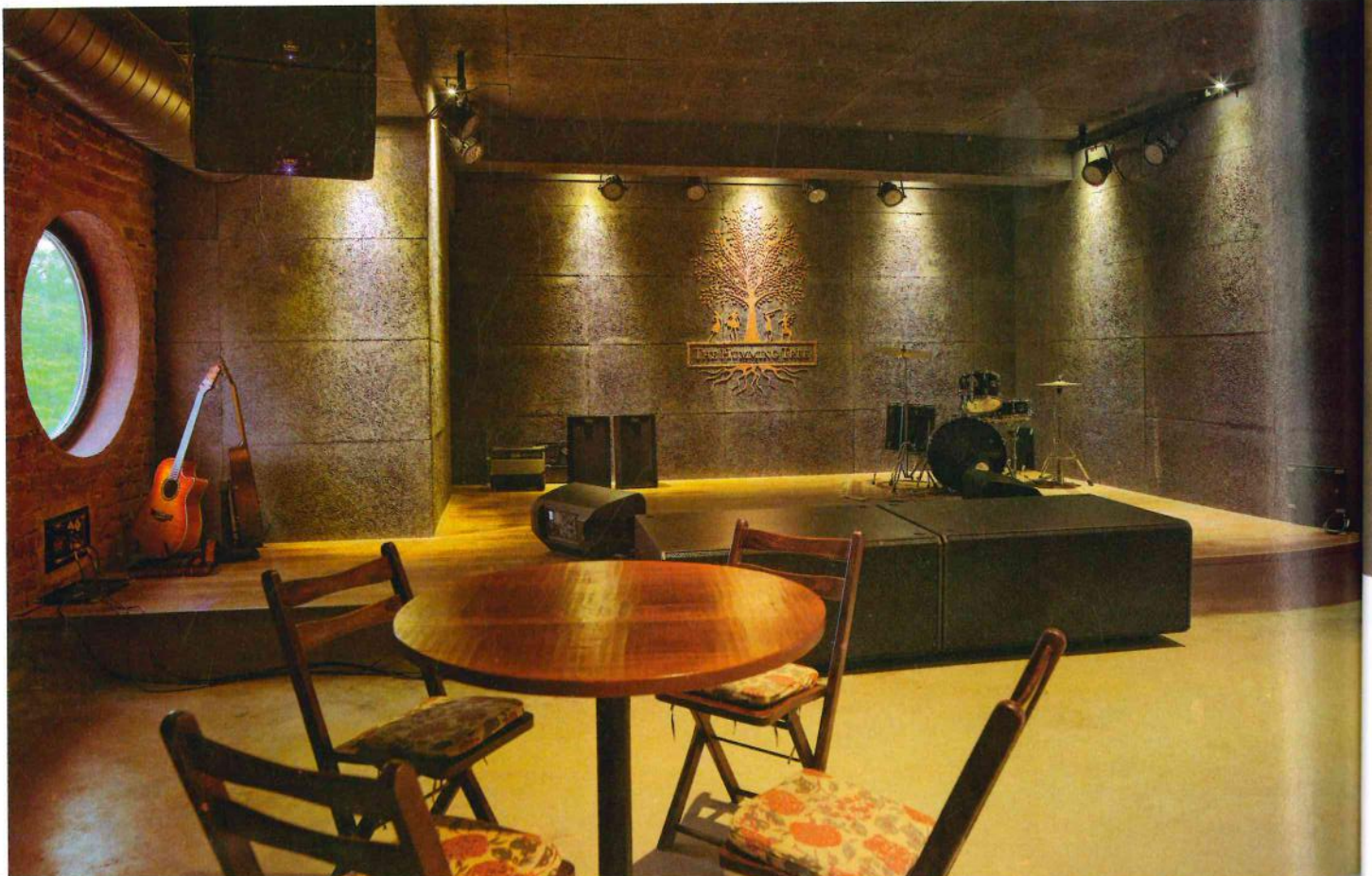
Inspired by the turquoise blue of the Mediterranean sea, FADD Studio has a glassy appearance; while the turquoise resin continues throughout the entire space of 500 sq. ft. area. At the entrance, clear acrylic rods hang from the ceiling, creates a visual partition between the workspace and visitor's space. This studio has a bathroom, pantry, printing area, staff area and storage area; a library for books and one for materials; a white wall to scribble on; and a cabin for the partners. As the flooring is the highlight, walls are painted white to give a perception of openness and lightness. The furniture too is either white or transparent to make the whole space look clutter-free with an exception of the architects' table in chrome yellow and an abstract shape. Abstract photographs by Farah adorn the walls.





The Humming Tree

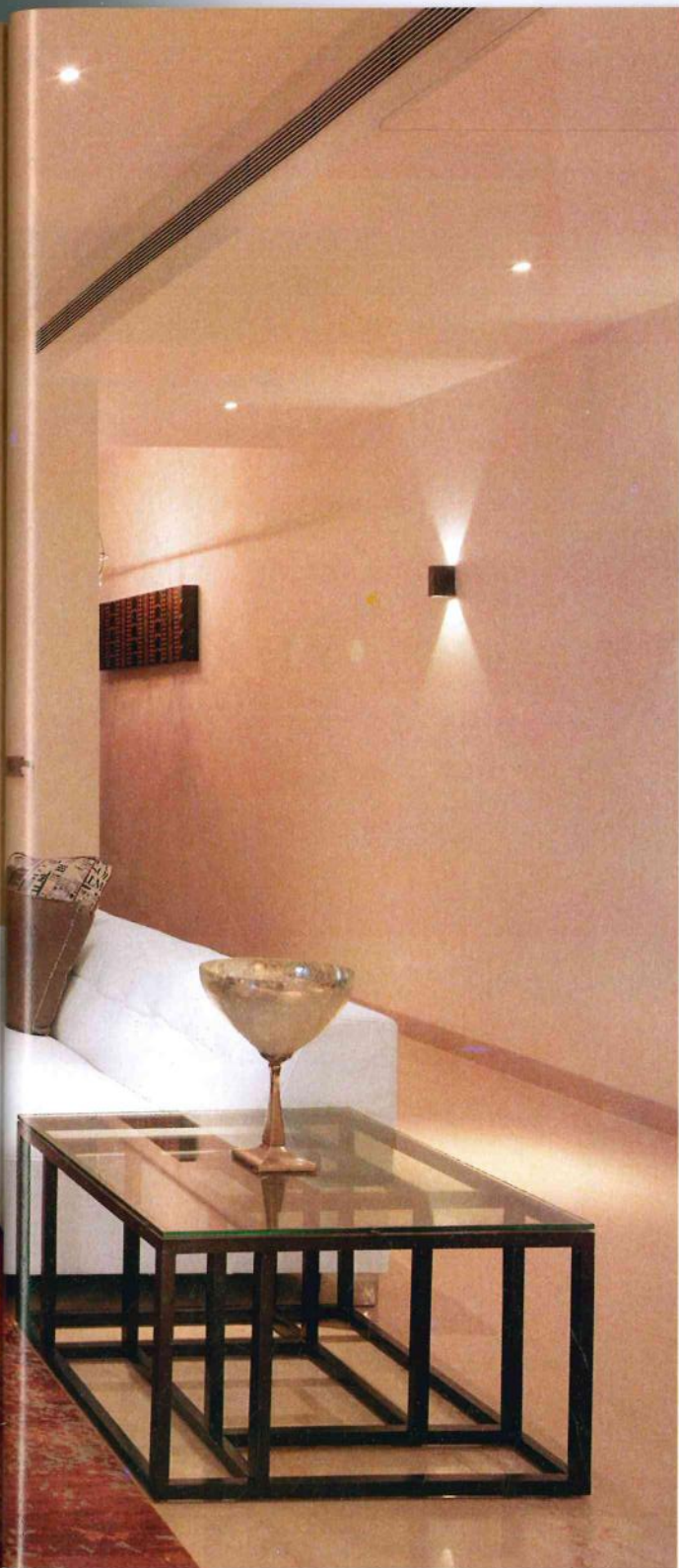
The Humming Tree is a music venue and bar in Bengaluru. Metal, cement and bricks are the main materials used here. The entrance has an oxidized metal riveted door with a large round peep-hole. The entire shell structure is finished in burnt rust cement. Large old school bulbs diverge from the centre and are suspended at different levels. Exposed AC ducts are visible on





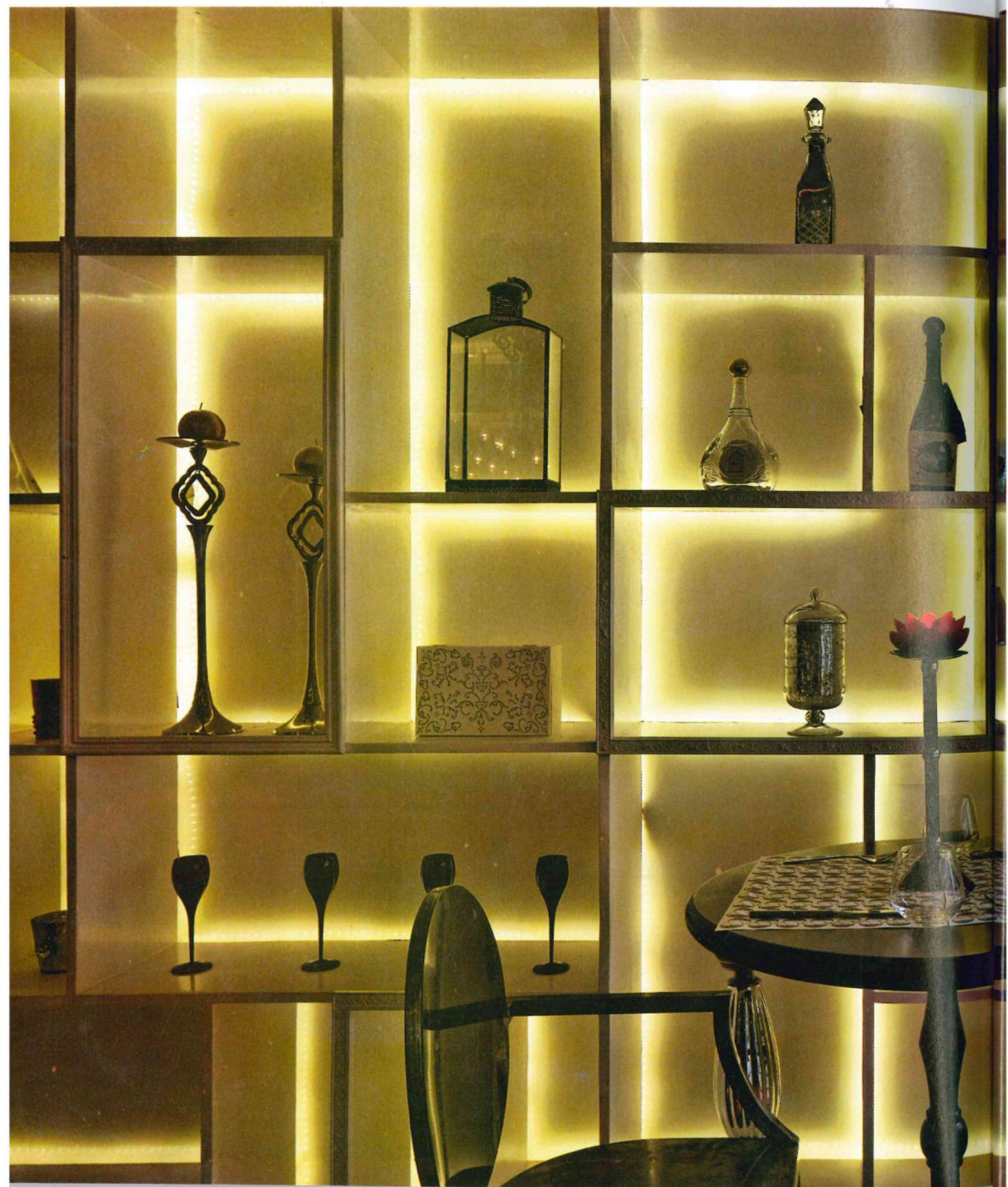
the sound-proofed grey ceiling. The terrace and bathrooms are whimsical and quirky. Filled with distressed furniture and organized by type of activity, this is a comfortable place for music lovers.





White Lodge

Chic, classy and contemporary, this apartment is a holiday home of an NRI client who wanted a new look. The entrance has two high-back chairs that are placed against a gauze-like wallpapered wall. The whole set-up is lit by a semi-modern chandelier. A small narrow passage connects this quasi-opulent foyer to the massive and high living and dining spaces. The bedrooms are minimal and warm with neutral-coloured upholstered beds, lacquered furniture and light-coloured wallpaper. This apartment has the best of both worlds—the clean and neat look of a hotel and the personal touch of a home.





Le Cristaal

Le Cristaal, the city's first deli and restaurant, was conceptualized around the French Boudoir, historically a lady's private bedroom, sitting room or dressing room. Depicting the traditional boudoir colours of red, black and white, the concept has been used to create a luxurious space. Red carpets and a black chandelier further adds to the richness of the theme. Exposed beams along with the distressed design on the ceiling bring in the old European cafe charm. A combination of fuss and ease, Le Cristaal is an example of packing in smart elegant design into a small space, which transforms from a deli during the day to a romantic spot at night.



Flower Box

Of all the retail spaces one can design, a florist's boutique is a unique project for any designer. The design of Flower Box represents minimalism in colour, balance in form and harmony in shape. Paper bamboo veneer ceiling installation, translated from the earthy concentric Zen garden circles unites with the gently shaded walls and floor to form an equilibrium that enhances the natural vibrancy of the flowers. Maple shelves and furniture complement the colourful flowers. The façade of the shop is inspired by the vermilion of the Japanese temple gates and fences. ■